

Cedar Grove Cemetery “Coming Home”



“Coming Home” Newsletter, Vol. II March, 2007

“Coming Home” Honors Sorrows Shared by Mary, Church

Notre Dame’s ongoing “Coming Home” initiative has added a spiritually rich dimension to its vision of service. The University’s Office of Campus Ministry, which is overseeing the initiative as part of its ministry to current and former Notre Dame students, has named the mausoleum complex *Our Lady of Sorrows at Cedar Grove Cemetery*.

The name honoring Our Lady, Notre Dame, under her title as Our Lady of Sorrows, is apropos for several reasons. First, the Venerable Father Basil Anthony Moreau, founder of the Congregation of Holy Cross, dedicated the order to Our Lady of Sorrows as patroness. Secondly, the focus on the sorrows suffered by Mary as the Mother of Jesus reminds us to draw near to Mary’s understanding of, and grace-bestowing compassion for, the sufferings shared by loved ones. Thirdly, the Marian theme will unite all parts of the new mausoleum complex, recalling titles given in the Litany of the Blessed Virgin Mary; thus, the first two mausolea constructed are named Mary, Queen of Angels and Mary, Queen of All Saints.

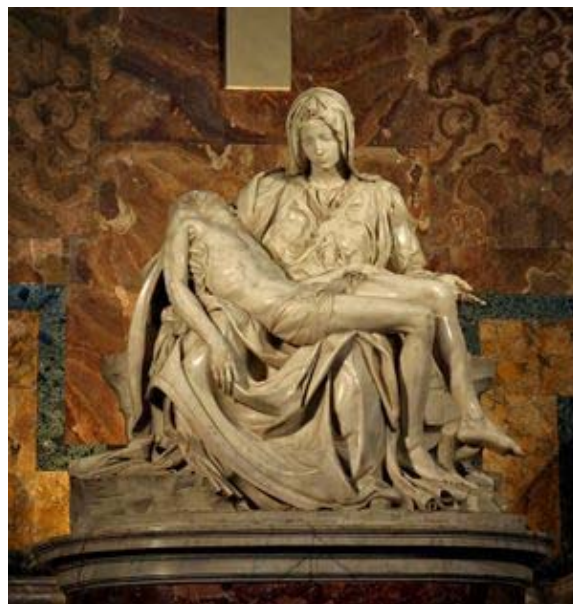
In short, coming home to Notre Dame, Our Lady’s University, has much to do with the embrace of Mary, the Queen of Heaven, always pointing the way to Jesus Christ, who conquered death. This motherly message spans a family’s joys and sufferings, births and deaths, because Mary experienced so much suffering—and so much joy—as the Mother of Jesus Christ, the Son of God. By Church tradition, she suffered seven particular sorrows, which are sometimes pictured as seven swords piercing her heart.

All visitors to *Our Lady of Sorrows at Cedar Grove Cemetery* will now be implicitly invited to share the comforting and profound presence of Mary. They join in fellowship with the whole Church, which prays the “Stabat Mater” recalling her sadness:

*At the Cross Her station keeping,
stood the mournful Mother weeping,
close to Jesus to the last*

as well as the “Salve Regina” to our Holy Queen:

*After this, our exile,
show unto us the blessed fruit
of thy womb, Jesus.*



The *Pietà* by Michelangelo, St. Peter’s Basilica, Rome, represents the Sixth Sorrow of Mary

The Seven Sorrows of the Blessed Virgin Mary

1. The Prophecy of Simeon at the Temple
2. The Flight of the Holy Family into Egypt
3. The Loss of the Child Jesus in the Temple
4. The Meeting of Jesus and his Mother on the Way to the Cross
5. The Crucifixion
6. The Taking Down of the Body of Jesus from the Cross
7. The Burial of Jesus



Cedar Grove Cemetery “Coming Home”

Landscape Design for *Our Lady of Sorrows at Cedar Grove Cemetery* Scott Freres, Principal, The Lakota Group

The landscape design for “Coming Home” is intended to achieve an immediate impact on the cemetery’s character, while establishing a matrix from which to build for the future. The guiding principle is to create a pastoral, reflective and somber setting that accentuates the architecture and, over time, blends the old section of the cemetery with the new. The landscape for *Our Lady of Sorrows at Cedar Grove Cemetery* can be broken down into three distinct spaces: the arrival sequence, the cloister garden, and the foundation/perimeter planting.

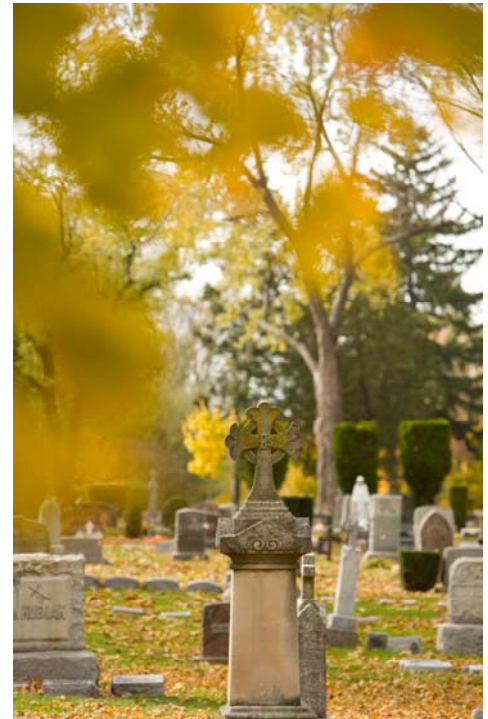
Entering the garden from the east, the goal is to create a sense of arrival. A new circular entrance drive will be lined with a mixture of Autumn Blaze Maples and Honeylocust trees. These large deciduous trees will be planted at a substantial size in order to aid in the transition from the mature character of the cemetery’s old section. While they differ in texture and form, both have large canopies and striking fall color.

Delineating the “gates” to the entry garden, matching Aristocrat Pears and granite piers will border the pedestrian walkway. The Pears, which have an upright, formal character, produce brilliant white blossoms to

welcome the spring season. Moving through this area, visitors will come upon an elliptical garden space outlined with boxwood hedges that will give the garden definition throughout the year. A combination of Knockout Shrub Roses, Russian Sage and Dwarf Fountain Grass form the focal element at the center of this garden and will accentuate the religious statuary envisioned for this space.

Upon leaving the entry garden one will come upon the cloister garden between the mausolea. Four specimen flowering Magnolia trees highlight this space and frame the axial view of the future cemetery gardens to the west. A formal hedge of boxwood defines two additional beds accented with a simple palette of Dwarf Fountain Grass, Russian Sage and double blooming Yellow Daylilies. The texture and form of Rockspray Cotoneaster, a deciduous low-growing shrub, complements the boxwoods and hardy, long-lasting perennials. All of these plantings, along with comfortable teak benches and natural clay pavers, combine to create a peaceful, tranquil setting for reflection and meditation.

The final component of the landscape character is the simple foundation and perimeter planting areas. Here, a manicured Hicks Yew hedge will line each mausoleum façade and physically and visually separate it from the adjacent enclosed garden spaces. These evergreen shrubs combine with matching Black Hills Spruce located at the corners of the mausolea to create a more formal planting structure that accentuates the architecture and reinforces the geometry of the mausolea. Small seating pockets will be located on the north and south sides of the mausolea where Serviceberries line the paved walk. These spring-blooming trees end the fall season with a beautiful leaf display of brilliant orange and red. Spatially, the plantings along Holy Cross Drive provide a defined focus and frame the view north to the statue of Our Lady on the Golden Dome and the Spire of the Basilica.



Cedar Grove Cemetery in the Fall



Autumn Blaze Maple



Knockout Shrub Roses



Russian Sage



Flowering Magnolia



Honeylocust

Cedar Grove Cemetery “Coming Home”

Construction Update

Construction of Mary, Queen of Angels and Mary, Queen of All Saints mausolea began on December 11, 2006 with the excavation and foundation work completed prior to the Christmas holiday.

In spite of the cold weather, work has progressed according to schedule. Forming of the crypts and niches began in early February and is expected to finish in early March, after which the roof will be installed followed closely by installation of the brick, limestone and granite. The installation of these materials will continue through the completion of the project.

Opening of *Our Lady of Sorrows* at Cedar Grove Cemetery

The opening of *Our Lady of Sorrows* at Cedar Grove Cemetery will be a staged process. This approach has been developed to ensure the fair and consistent handling of purchase and interment requests.

► May/June, 2007:

- **An information packet will be distributed via U.S. mail to those who have expressed interest in the mausolea and have submitted their mailing address. The information packet will be too comprehensive for distribution via e-mail. If you currently receive information regarding “Coming Home” via e-mail only, please visit the cemetery website and complete an Information Request Form (<http://cemetery.nd.edu/coming-home/information-request-form/>).** You will receive a confirmation that your mailing address is on file with our office.

Information contained in this packet will include:

- *Our Lady of Sorrows* at Cedar Grove Cemetery
This brochure will fully explain the above-ground burial opportunities available at Cedar Grove Cemetery.
- Choosing a Sacred Place
This brochure will enable you to make an informed decision regarding the selection of above-ground burial space in *Our Lady of Sorrows* at Cedar Grove Cemetery. Detailed drawings of the mausolea and pricing for each single and companion crypt and niche will be included.
- In Sure and Certain Hope: Planning a Catholic Funeral
This brochure will provide information necessary to plan your funeral in keeping with the traditions of the Catholic Church.
- Questions About Cremation for Catholics
This brochure addresses the Catholic Church’s position on cremation and answers many common questions as more and more families choose cremation.

► June/July, 2007:

- Once the facility is complete, an announcement letter will be mailed via U.S. mail to those who have expressed interest in the mausolea *and have submitted their mailing address* (see above).
 - The letter will announce the date to call and schedule your personal one-hour counseling session. All requests to purchase above-ground crypts and niches will be processed exclusively during a scheduled counseling session with one of our cemetery counselors.

► July/August, 2007:

- *Our Lady of Sorrows* at Cedar Grove Cemetery opens.
 - Counseling sessions begin. Counseling sessions will be conducted in one-hour increments, either in person at the cemetery or via telephone. Counseling sessions will be conducted **by appointment only** Monday through Friday and most Saturdays. Walk-ins will not be accepted.
 - A virtual tour will be available via the cemetery website. The virtual tour will enable out of town alumni to tour the mausolea and experience views of campus, the cemetery, and gardens from the comfort of their home.
 - Committal services may be scheduled during your counseling session. Committal services will be conducted **by appointment only** Monday through Friday and most Saturdays.



Mausoleum: North/South Elevation



Cedar Grove Cemetery “Coming Home”

Pricing Structure

- ▶ Pricing for above-ground crypts and niches in *Our Lady of Sorrows at Cedar Grove Cemetery* is based on several cemetery industry practices:
 - Cost of construction
 - Maintenance in perpetuity
 - Location of the crypt or niche within the facility

In contrast to many other cemeteries, pricing for *Our Lady of Sorrows at Cedar Grove Cemetery* is inclusive of standard interment and memorialization fees associated with above-ground interment.

Prices for above-ground burial in *Our Lady of Sorrows at Cedar Grove Cemetery*, including the interment fee and memorialization at the time of need, will range from \$3,500—\$4,700 for a single niche and \$8,500—\$11,000 for a single crypt. Prices for companion niches and crypts are approximately double and include the interment and memorialization fees for two individuals.

Payment Plan

Cedar Grove Cemetery will offer a three-year payment plan with no carrying charges. A 25% deposit will be required within 14 days following a counseling session to reserve a crypt or niche. Thirty-six (36) equal monthly payments will be required thereafter. A crypt or niche must be paid in full before a committal service may be held.

Eligibility

Notre Dame alumni or their surviving spouse will be eligible to purchase above-ground crypts and niches. Purchase eligibility will also be extended to the members of Sacred Heart Parish, Notre Dame, Indiana who have been registered and active for a period of five (5) or more years. University faculty, staff, and retirees with the requisite years of service will also be eligible. Alumni, parishioner or employment status will be confirmed with the appropriate campus office prior to issuance of a Deed.

Purchase Limits

Crypts and niches will be sold as “single,” for the interment of one person, or as “companion,” for the interment of two individuals. Each eligible person will be allowed to purchase space for up to four interments as:

Crypts

Four (4) single crypts

Two (2) single crypts and one (1) companion crypt

Two (2) companion crypts

Niches

Four (4) single niches

Two (2) single niches and one (1) companion niche

Two (2) companion niches

Contact Us

Please continue to visit the cemetery website (cemetery.nd.edu) periodically for the most up-to-date news and information. You may also contact the “Coming Home” office via telephone at 574.631.5660 or e-mail at cominghome@nd.edu.

Glossary of Terms

Mausoleum: A large building housing several crypts and niches for burial and memorialization of the human body or cremated remains.

Mausolea: Plural form of mausoleum.

Crypt: An above-ground tomb or chamber used for the burial of full-body human remains.

Niche: An above ground burial crypt, sized for an urn, containing the cremated remains of the body.

Interment: The ritual of placing the body of the deceased in a grave, crypt or niche.

Committal Service: The final invocation of the body by a priest at the cemetery prior to interment.